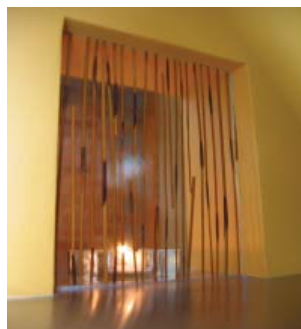
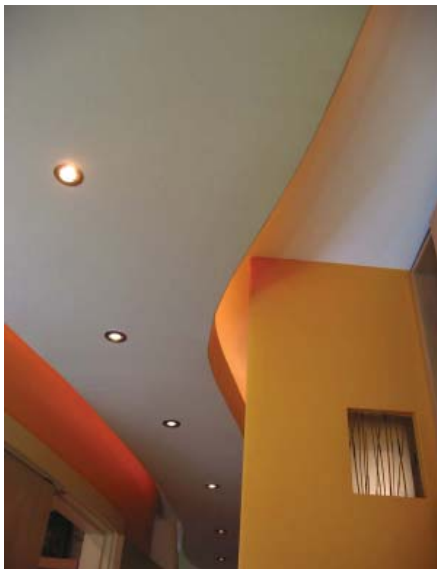


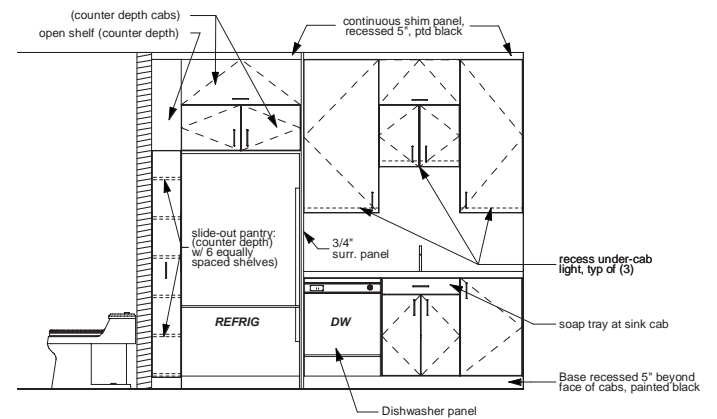
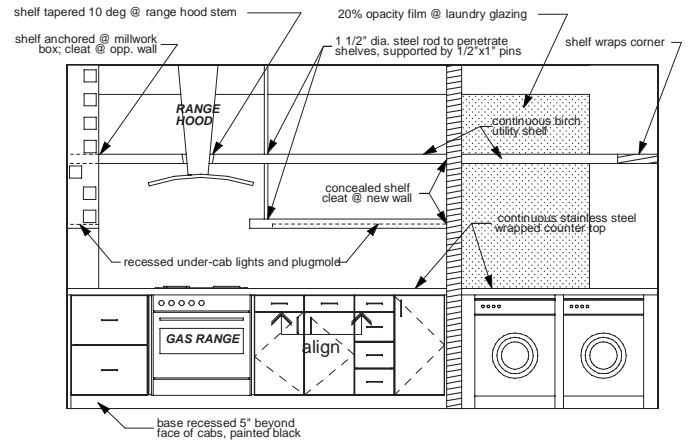
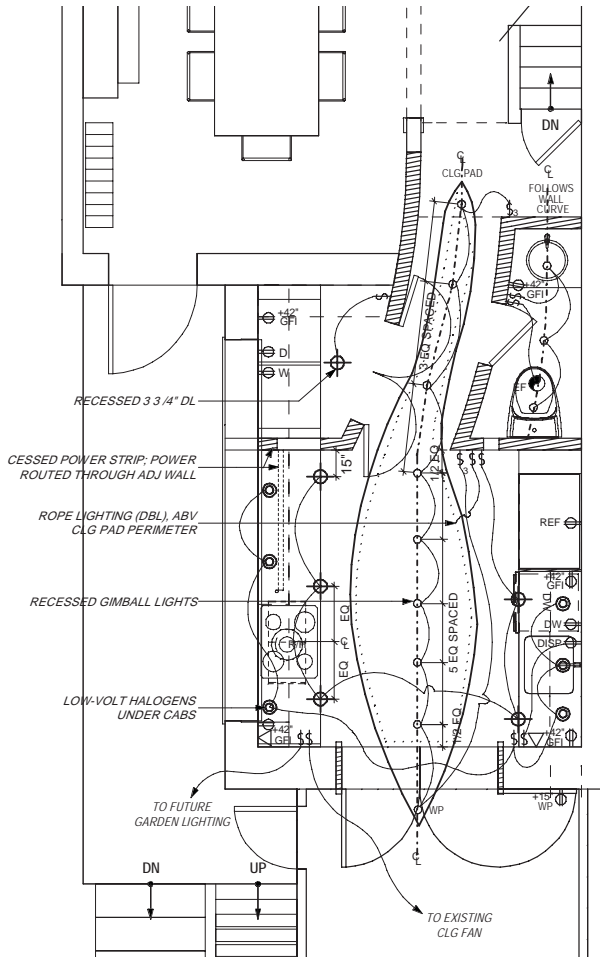
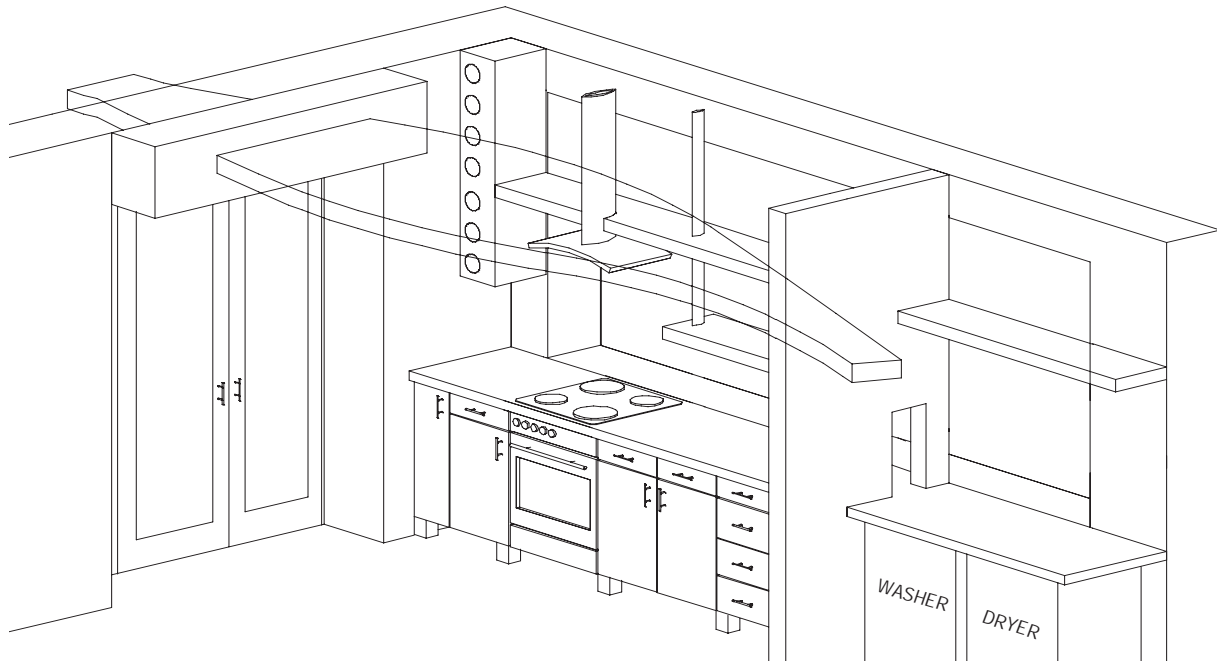
Washington, DC Row house

Summary:

This inefficient, dark, row house kitchen was reorganized into a bright, highly functional 3-room space. A curving entry corridor and warmly lit ceiling pad above provide a graceful transition between the old and new areas, and a dramatic entrance and passageway for what is typically a stagnant path of circulation in these narrow houses.

While the kitchen was reduced by 30% to admit a new laundry and powder room into the existing footprint, it seems vast through the introduction of abundant natural light, vibrant color combinations, and reflective and space-lengthening horizontal elements. To achieve this and to maintain the continuity between the divided areas, deep, stainless steel work surfaces and floating maple shelves glide around elements and through the dividing partitions; translucent resin apertures in the walls allow glimpses of the continuity and present unexpected bursts of color in the changing daylight; uninterrupted floor-to-ceiling glass spans the entire length of the exterior side wall to illuminate every room and ultimately, the entire rear of the house. It has cut energy costs substantially and the sustainable materials used throughout the space make their own contribution toward improved living and a healthier environment.





Cabin John, MD Residence

Design challenge:

To increase the size and functionality of a crowded kitchen that was handicapped by a central dividing wall. Seating for 5 and a separate homework and laptop station was requested.

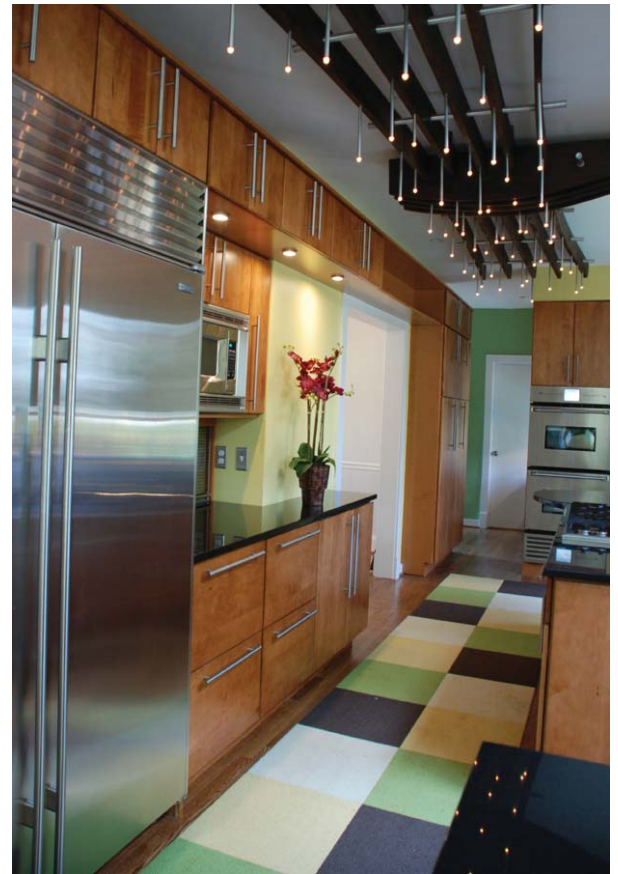
Solution:

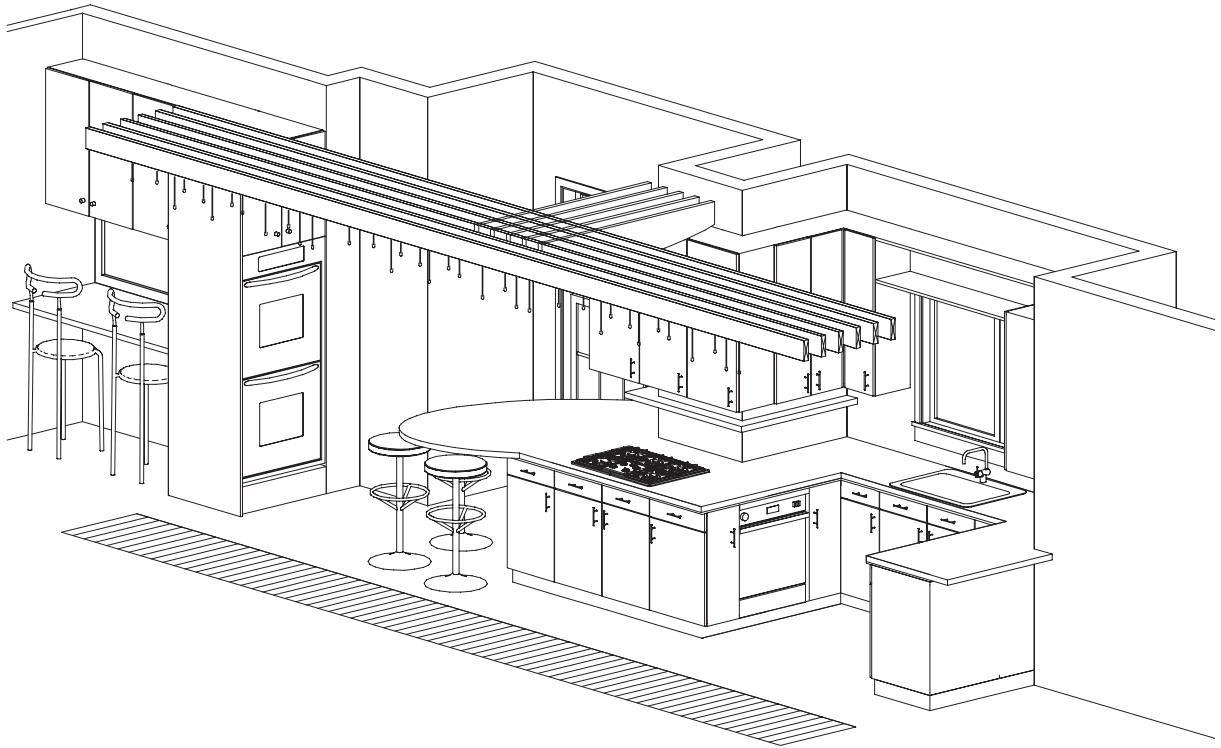
With a few structural changes to the ceiling and an interior garage wall, the two separated areas of the kitchen became one open, bright and continuous multi-functioning space. A 2-person homework area was carved out of the oversized garage at the far end. The amount of cabinet storage was tripled by double-loading the kitchen corridor and extra deep counters, appliance garages and integrated spice jar shelving left enough counter space to seat a family of 5 with even more prep space than was available previously.

Custom treatments:

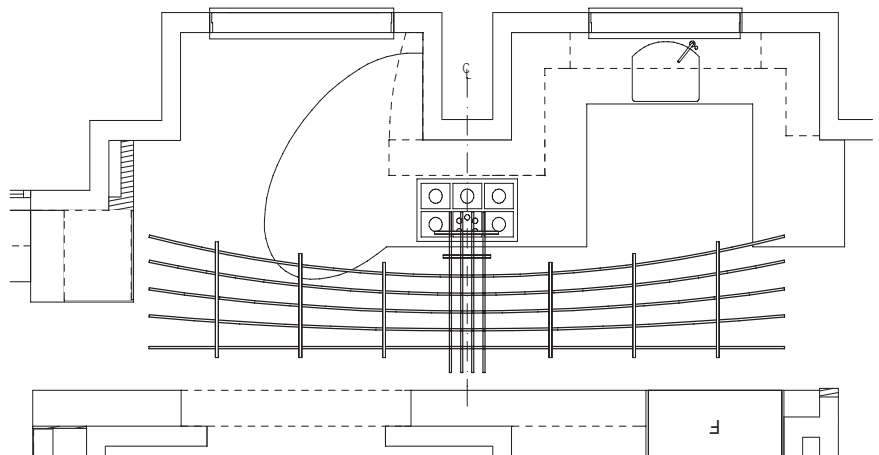
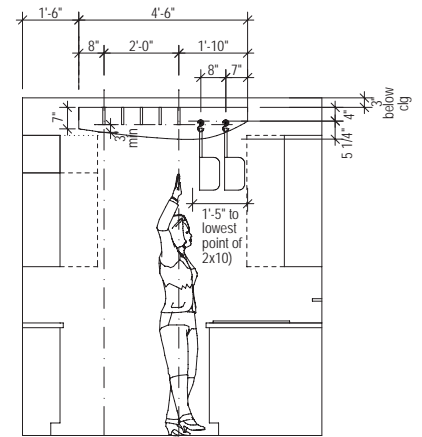
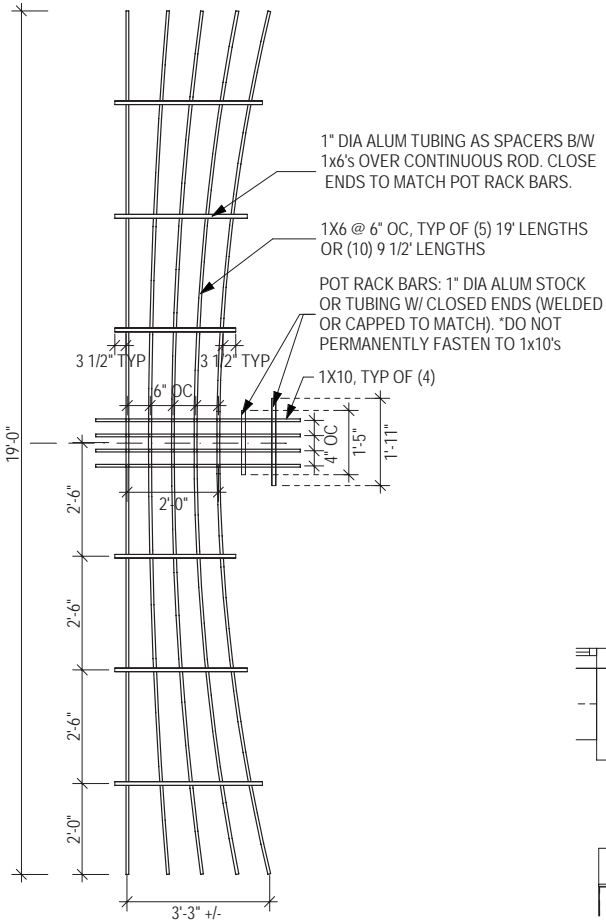
The ceiling feature, which bridges the two ends of the elongated kitchen, provides a range of ambient lighting and overhead pot and pan storage at the cooking station.

existing conditions





*DIMENSIONS ARE TO CENTER LINES (WHERE APPLIC.)



Washington, DC Condo

Designer’s note on combining two separated areas:

“Multiple seating groups will delineate different areas but even a small room can feel fragmented if the functions turn their backs to each other. Balance the far sides of a room with a matching, obvious accent color and with light fixtures from the same family, and join the separated areas with a dominant central feature like this vent-free fireplace. Many wall-hung and movable fireplaces are ecofriendly, emitting only water vapor and as little CO2 as humans, and give high-rise buildings the cozy feeling of a house”.

Designer’s furniture solution for this small space:

“Over 25% of this room’s floor space is lost to circulation by serving as the main corridor through the unit, which naturally pushes all of the furniture here to the opposite wall. Rather than compromising on compact furniture to fit into the remaining, reduced square footage, we used a long and lean armless sofa that provides more length for sitting. Rounded or nesting glass tables allow the eyes and feet to move more easily about a tight space. If you can afford to dedicate one entire corner to a chaise, the room will feel luxuriously larger than it is and will make up for the lounging capability of a traditional sofa and coffee table or ottoman”.

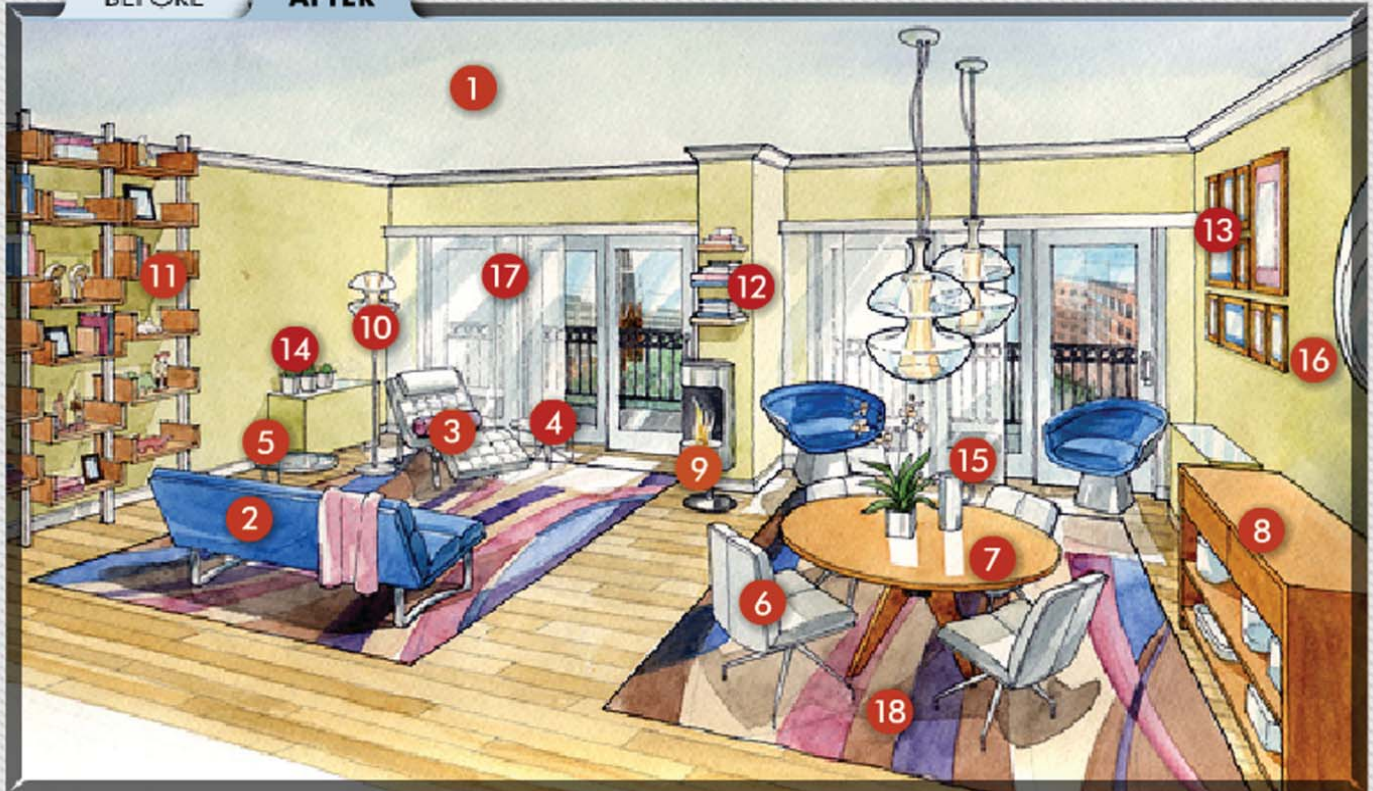


existing conditions

HOME & GARDEN HOUSE CALLS

BEFORE

AFTER



Designer's thoughts on color schemes:

"Clients wanting an 'open-and-airy-feeling' often resort to pastel color schemes. While it's true that lighter colored walls visually expand a space, a punchy area rug and a shaded ceiling will breathe life into a vanilla box. Furniture in light and soothing colors and a triangulation of natural and artificial light will keep the room bright and balanced. On the walls we used Afinity "Grasshopper" AF-415 by Benjamin Moore, with an icy blue "Constellation, AF-540" on the ceiling. All trim is in "Super White" for perfectly crisp edges. A white leather chaise and a powder blue sofa tie in the client's existing blue Plater chairs. A contrasting medium-toned wood table and sideboard bring out the darker color variations in the blonde hardwood floor without becoming too visually heavy. A lilac color is used in the accessories as a watery accent, with more neutral touches of glossy white and stainless steel to give the space a sophisticated, tailored finish.

House Calls
By Katherine Horn

Materials: Benjamin Moore
Paint: Grasshopper for the walls. Constellation for the ceiling. Super White for the trim. All from Benjamin Moore.

Designer: Susan Pridmore of Spindler & Spindler, Inc., Washington, DC. www.spindlerandspindler.com

Suggestions: It's always smart to take advantage of any space through thoughtful design. In this case, the designer's goal was to create a bright and airy living and dining space. With its open floor plan, the space is perfect for a modern approach to design. Incorporate the bright colors and textures, such as the green chair and the stainless steel table. The designer also used a mix of materials to give the space a sophisticated, tailored finish.

On one side, create a seating area with a white leather chaise and a powder blue sofa. On the other side, choose chairs and a medium table and add a sideboard for contrast. Use light wood floors, a round coffee table, a round dining table, a round sideboard, and a round dining table. All items by Modigliani and available at www.modigliani.com. Prices range from \$1,995 to \$3,995.

On the other side, choose chairs and a medium table and add a sideboard for contrast. Use light wood floors, a round coffee table, a round dining table, a round sideboard, and a round dining table. All items by Modigliani and available at www.modigliani.com. Prices range from \$1,995 to \$3,995.

On one side, create a seating area with a white leather chaise and a powder blue sofa. On the other side, choose chairs and a medium table and add a sideboard for contrast. Use light wood floors, a round coffee table, a round dining table, a round sideboard, and a round dining table. All items by Modigliani and available at www.modigliani.com. Prices range from \$1,995 to \$3,995.

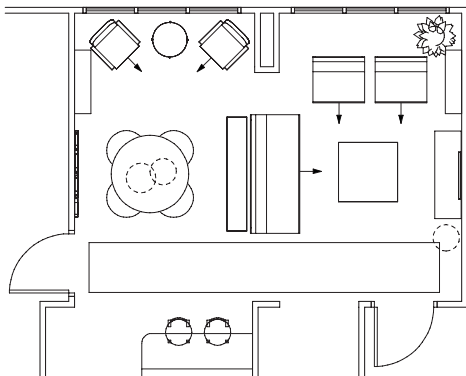
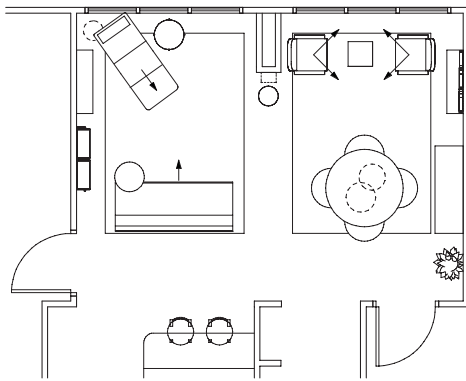
On the other side, choose chairs and a medium table and add a sideboard for contrast. Use light wood floors, a round coffee table, a round dining table, a round sideboard, and a round dining table. All items by Modigliani and available at www.modigliani.com. Prices range from \$1,995 to \$3,995.

On one side, create a seating area with a white leather chaise and a powder blue sofa. On the other side, choose chairs and a medium table and add a sideboard for contrast. Use light wood floors, a round coffee table, a round dining table, a round sideboard, and a round dining table. All items by Modigliani and available at www.modigliani.com. Prices range from \$1,995 to \$3,995.

On the other side, choose chairs and a medium table and add a sideboard for contrast. Use light wood floors, a round coffee table, a round dining table, a round sideboard, and a round dining table. All items by Modigliani and available at www.modigliani.com. Prices range from \$1,995 to \$3,995.

On one side, create a seating area with a white leather chaise and a powder blue sofa. On the other side, choose chairs and a medium table and add a sideboard for contrast. Use light wood floors, a round coffee table, a round dining table, a round sideboard, and a round dining table. All items by Modigliani and available at www.modigliani.com. Prices range from \$1,995 to \$3,995.

On the other side, choose chairs and a medium table and add a sideboard for contrast. Use light wood floors, a round coffee table, a round dining table, a round sideboard, and a round dining table. All items by Modigliani and available at www.modigliani.com. Prices range from \$1,995 to \$3,995.



Residential

R 4.1

City Vista/Foxen Condo Unit Staging, Washington DC

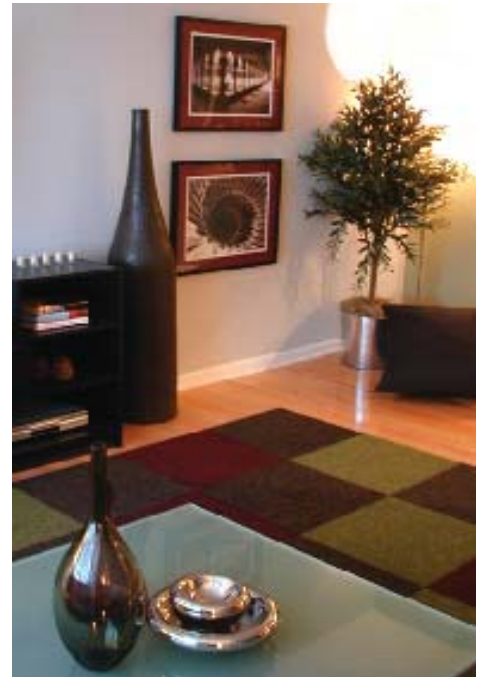
Summary:

"Cool modern" style was the design style requested for this 1100 SF 1 bed, 1 bath plus den unit in Penn Quarter's new City Vista complex. The style was achieved with a green-blue-mauve color palette, and a blend of glass and steel furniture and accessories. Metallic fabrics and felt carpet tiles keep texture to a cool minimum here.

cool color palette



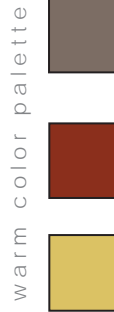
existing conditions



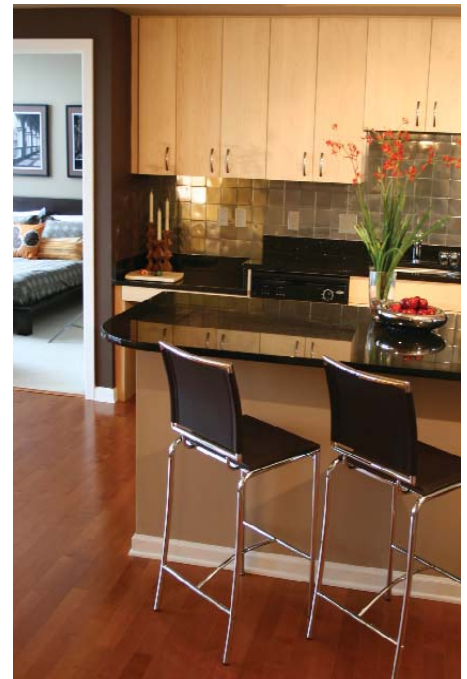
City Vista/Sutton Condo Unit Staging, Washington DC

Summary:

“Warm contemporary” was the design style requested for this 1500 SF 2-bed, 2-bath plus office unit in Penn Quarter’s new City Vista complex. The style was achieved with a color palette of warm reds, golds and chocolates. Shaggy flucati rugs and toothy pillow fabrics contribute to the warmth of the space.



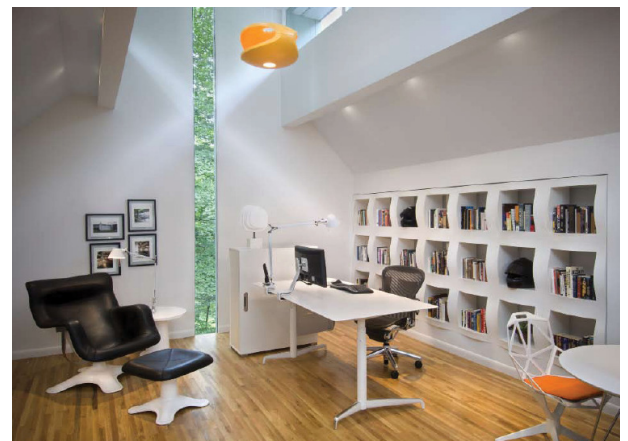
existing conditions



McLean, VA Residence

Summary:

This well known mid-century modern home in northern Virginia required a new office and additional square footage in most rooms. After relocating major structural, mechanical and plumbing in the unfinished attic, a spacious 250 square foot office emerged featuring Foscarini, Artifort and Vitra furnishings. An elegant soaking tub was recessed into the 1st floor by carving out a volume from the crawl space below. In these rooms and throughout, translucent walls and dimmable lighting create comfortable ambient light throughout the day and evening.

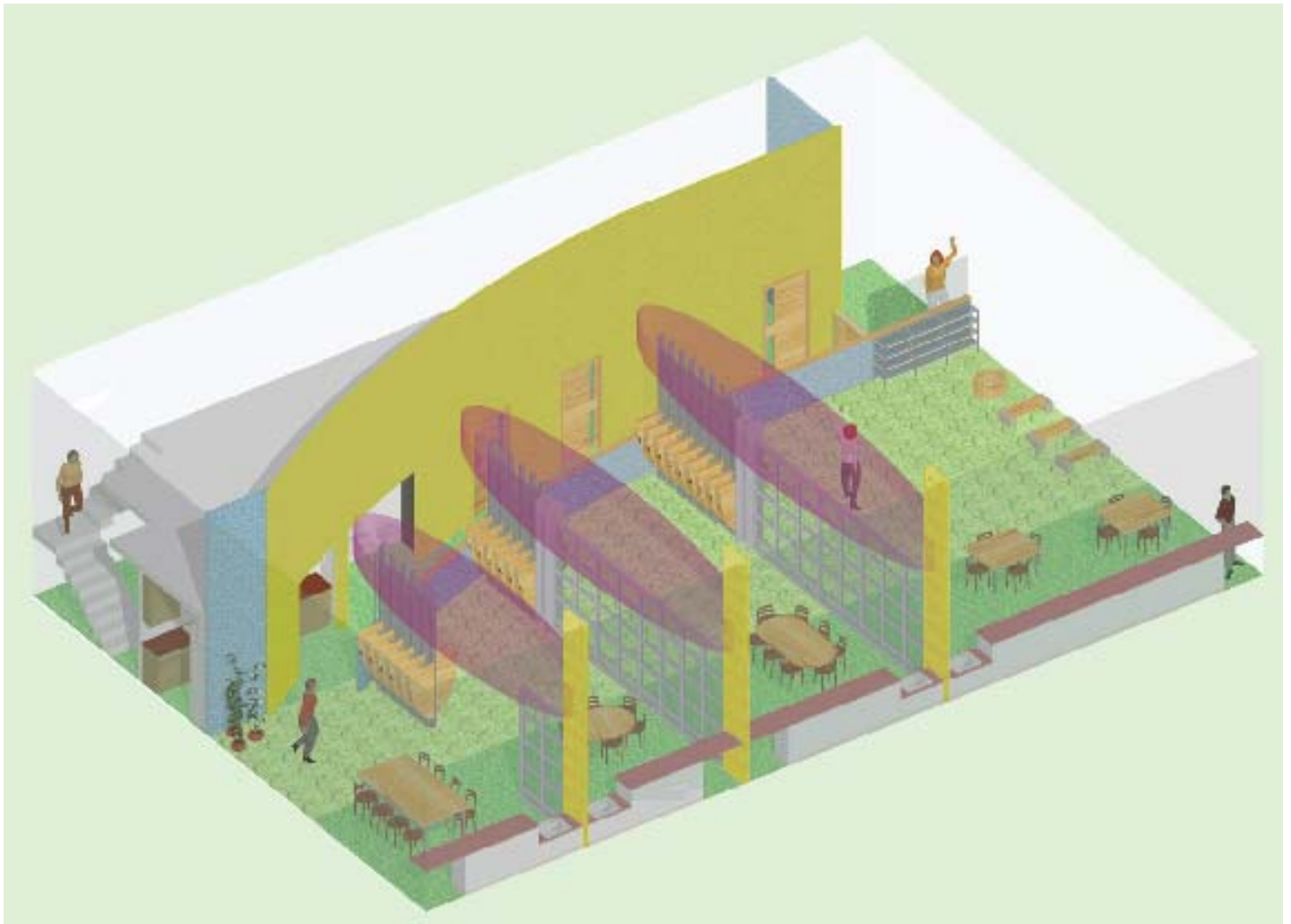
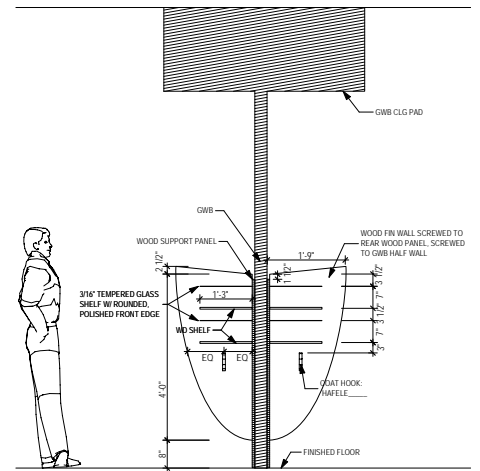
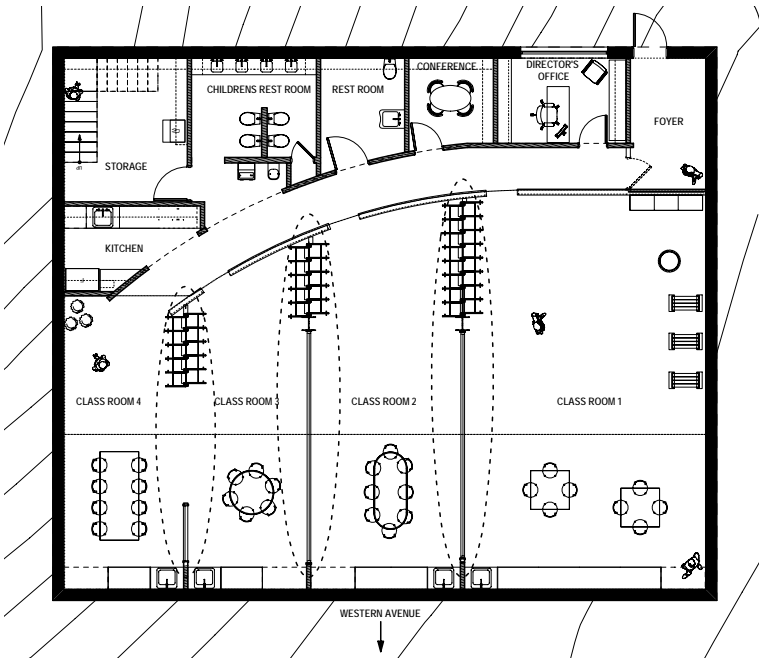


Friendship Children's Center, Washington DC

Summary:

5,000 SF were designed into this warm-lit shell on Western Avenue in Chevy Chase NW, Washington DC. A storage mezzanine above the support areas of this childcare center allowed for an open and functionally flexible main floor, which includes classrooms for four age groups. Playful ceiling pads and retractable, transparent partitions delineate the different areas and contain noise while still allowing to director to maintain visual access to all areas of the building. Storage cubbies were designed to house papers, lunch boxes, and coats and bags all separately and are elevated off of the floor to provide clearance for easy daily vacuuming.





Educational Furniture

E 4.1

Janney Elementary School Loft, Washington, DC

A play loft for a 2nd grade classroom in upper NW DC was a 2-day pro-bono project from conception to completion. Acrylic panels, 2x12s, dowel rods and canvas make up this 5x9 play space. Total cost: \$300.

